

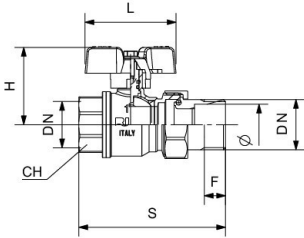


## RIV 4574

Ball valve M/F with hose-union  
 full bore  
 aluminium sealing butterfly handle

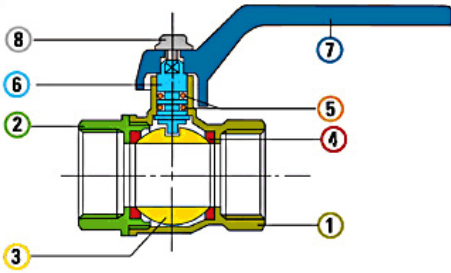
### Tech drawings and tables

| DN   | Code         | Ø    | H  | S  | L  | F  | PN | KG    | P/box |
|------|--------------|------|----|----|----|----|----|-------|-------|
| 1/2" | 024574000004 | 14,5 | 41 | 75 | 52 | 13 | 25 | 0,244 | 25    |
| 3/4" | 024574000005 | 19   | 48 | 84 | 60 | 14 | 25 | 0,340 | 10    |
| 1"   | 024574000007 | 24   | 51 | 98 | 60 | 17 | 25 | 0,540 | 10    |



## Technical data

Art. 4170



### Materials

|   |          |           |        |               |
|---|----------|-----------|--------|---------------|
| 1 | Body     | Brass     | CW617N | Nickel-plated |
| 2 | Body end | Brass     | CW617N | Nickel-plated |
| 3 | Ball     | Brass     | CW617N | Chrome-plated |
| 4 | Seats    | P.T.F.E.  |        |               |
| 5 | O-Ring   | NBR       |        |               |
| 6 | Stem     | Brass     | CW614N |               |
| 7 | Lever    | Aluminium |        | Red           |
| 8 | Screw    | Steel     |        | Zinc-plated   |

### Connections

ISO 228/1, ANSI B1.20.1 (NPT)

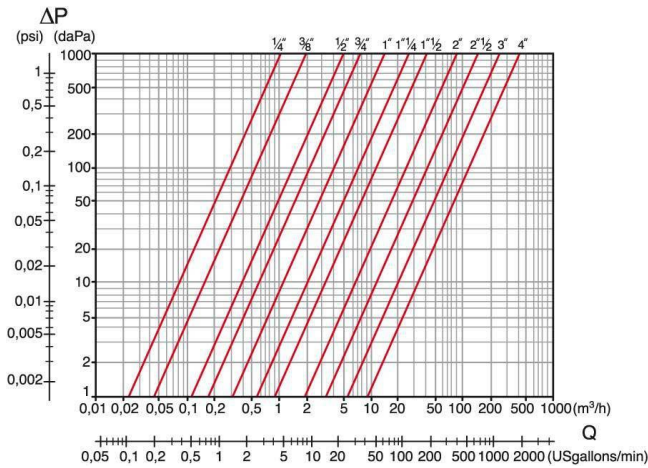
### Limit

-20°C (without liquid) +110°C

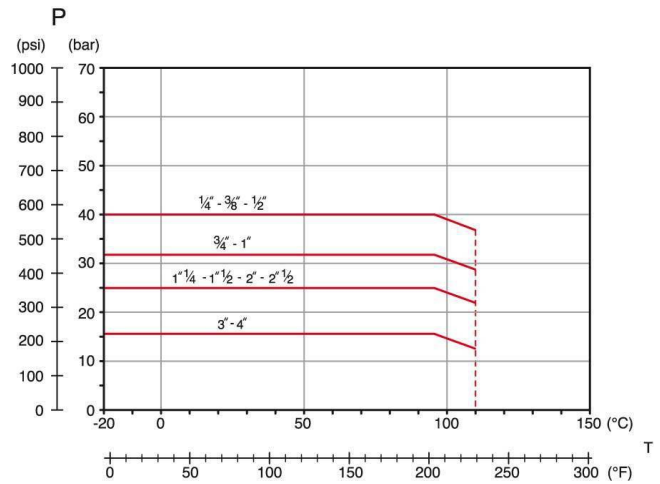
### Notes

The max.working pressure (PN) means at a room temperature of about 23°C.

## Pressure Loss Chart



## Temperature/Pressure



## Kv & Cv Coefficients

| Size  | Kv     | Cv     |
|-------|--------|--------|
| 1/4"  | 3,6    | 4,2    |
| 3/8"  | 6,6    | 76,0   |
| 1/2"  | 16,5   | 19,1   |
| 3/4"  | 25,0   | 29,0   |
| 1"    | 46,0   | 53,0   |
| 1"1/4 | 87,0   | 101,0  |
| 1"1/2 | 140,0  | 162,0  |
| 2"    | 275,0  | 318,0  |
| 2"1/2 | 500,0  | 578,0  |
| 3"    | 850,0  | 983,0  |
| 4"    | 1350,0 | 1562,0 |

## Approvals

