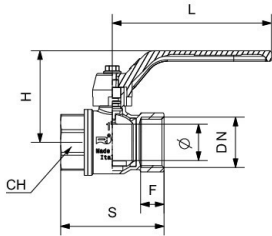




RIV 4170

Ball valve F/F
 full bore
 aluminium lever handle

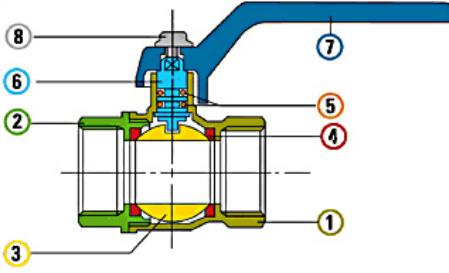
Tech drawings and tables



DN	Code	Ø	H	S	L	F	PN	KG	P/box
1/4"	02417000002	8	46	38	80	10	40	0,093	50
3/8"	02417000003	10	48	42	80	11	40	0,112	50
1/2"	02417000004	14,5	50	48	80	13	40	0,142	30
3/4"	02417000005	19	57	57	105	14	32	0,245	10
1"	02417000007	24	60	69	105	16,5	32	0,369	10
1"1/4	02417000008	30,5	73	79	120	18	25	0,572	8
1"1/2	02417000009	37	86	89	135	19	25	0,804	6
2"	02417000011	47	98	109	160	22,5	25	1,339	4
2"1/2	02417000013	60	110	126	160	23	25	2,040	1
3"	02417000014	75	148	147	265	25	16	3,428	1
4"	02417000016	94	163	177	265	29	16	5,856	1

Technical data

Art. 4170



Materials

1	Body	Brass	CW617N	Nickel-plated
2	Body end	Brass	CW617N	Nickel-plated
3	Ball	Brass	CW617N	Chrome-plated
4	Seats	P.T.F.E.		
5	O-Ring	NBR		
6	Stem	Brass	CW614N	
7	Lever	Aluminium		Red
8	Screw	Steel		Zinc-plated

Connections

ISO 228/1, ANSI B1.20.1 (NPT)

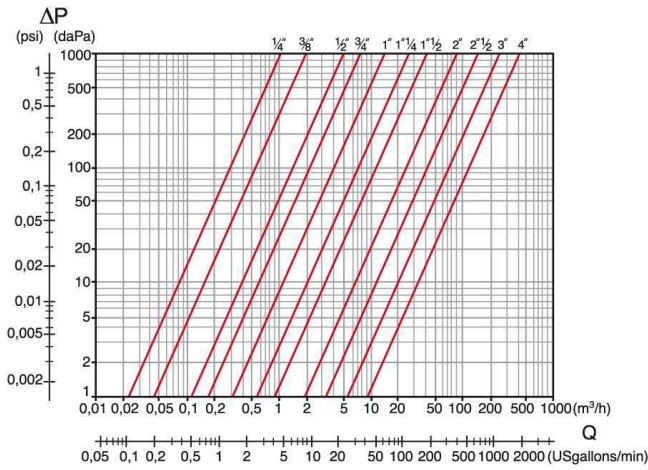
Limit

-20°C (without liquid) +110°C

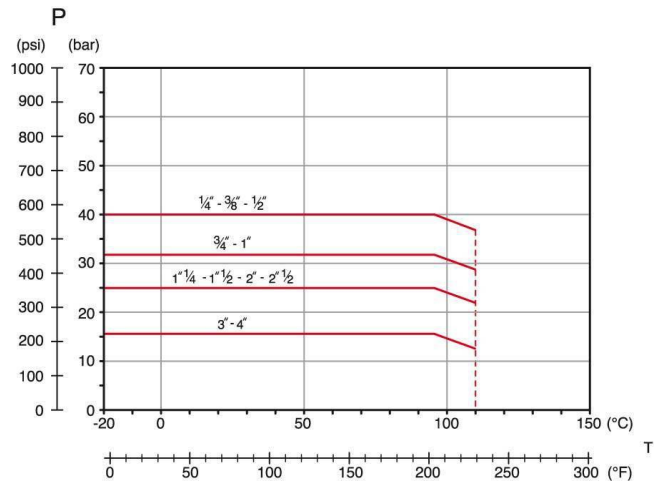
Notes

The max.working pressure (PN) means at a room temperature of about 23°C.

Pressure Loss Chart



Temperature/Pressure



Kv & Cv Coefficients

Size	Kv	Cv
1/4"	3,6	4,2
3/8"	6,6	76,0
1/2"	16,5	19,1
3/4"	25,0	29,0
1"	46,0	53,0
1 1/4"	87,0	101,0
1 1/2"	140,0	162,0
2"	275,0	318,0
2 1/2"	500,0	578,0
3"	850,0	983,0
4"	1350,0	1562,0

